

S.A.M. Trade Metatrader 4 (MT4) Starter Guide for Windows

Table of Contents

Installation	3
Metatrader 4 Overview.....	4
Change Language	5
Open Demo Account	6
Login to Demo Account	11
Login to Live Account	13

Installation

1. Download S.A.M.Trade's MetaTrader 4 Client Terminal platform from S.A.M. Trade website or by clicking the link below:

[Download MetaTrader 4 for Windows](#)

2. Launch the installation file the same way you launch any Windows program.



3. Check on the box “**Yes, I agree with all terms of this license agreement**” and click **Next**
4. The installation will continue
5. Once completed, the Metatrader 4 will launch.

Metatrader 4 (MT4) Overview

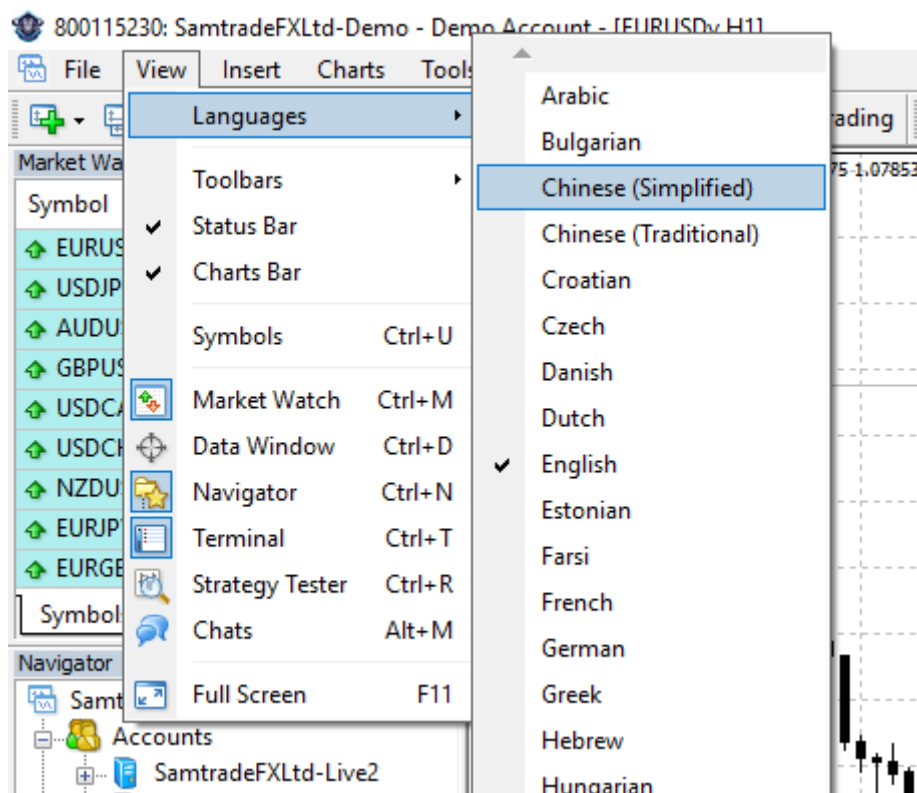
Here is the overview of what the MT4 platform look like.

- **Main menu** (access to the program menu and settings).
- **Toolbars** (quick access to the program features and settings)
- **Market Watch** window (real-time quotes for the specified instruments).
- **Navigator** window (quick access to all your accounts, indicators, expert advisors)
- **Terminal** window (quick access to the trading and account history, list of open positions and placed orders, client terminal log-file and internal mailbox).

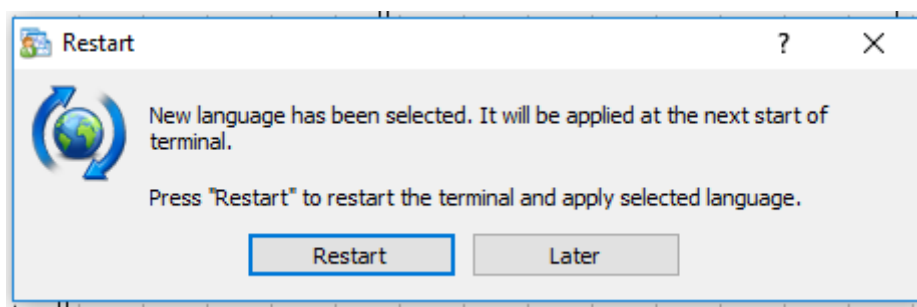


Change Language

- You can change the language of the MT4 platform by clicking on **View → Languages → Select the language you want**

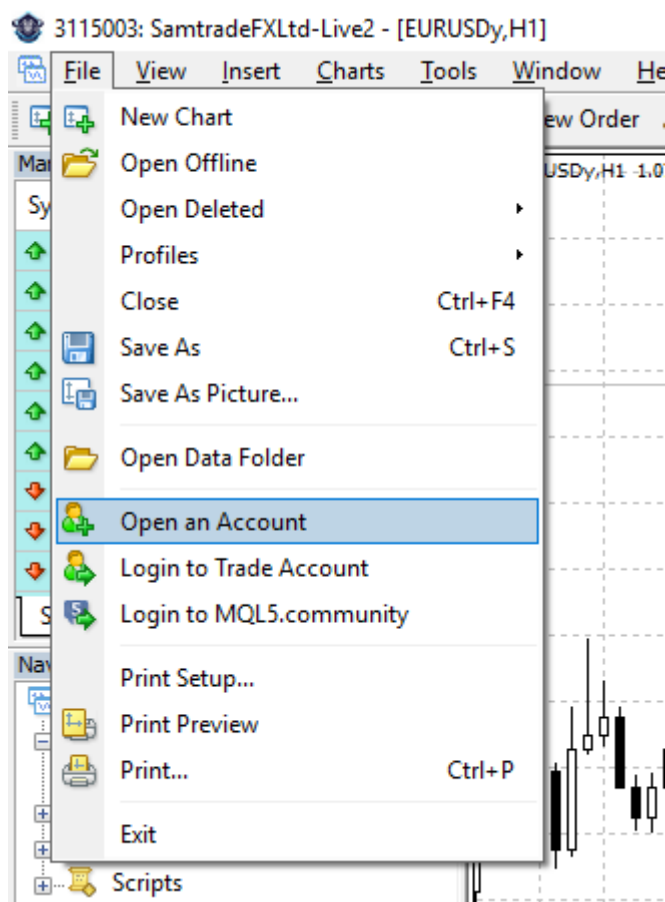


- Press **Restart** to apply the selected language



Open Demo Account

- Client is able to create a Demo Account by clicking on **File → Open an Account**



Open Demo Account




- Select **Samtrade-Demo** server and click **Next**.

Open an Account

?

×

Trading Servers
Select a more suitable trading server:

Address	Company	Ping
 Samtrade-Demo	Samtrade FX Ltd	167.43 ms
 Samtrade-Live	Samtrade FX Ltd	164.71 ms
 add new broker like "BrokerName" or address mt.company.com:443		

Scan

Next >

Cancel

Open Demo Account

- Select **New demo account** server and click **Next**.

Open an Account
?
X

Select account type
To start working an account is required:

To start working, you need a valid trade account. If you don't have it, you can create a demo or real account by selecting the corresponding option below and pressing 'Next':

☐ Existing trade account

Login:

Password: ☒ Save password

Server: Samtrade-Demo

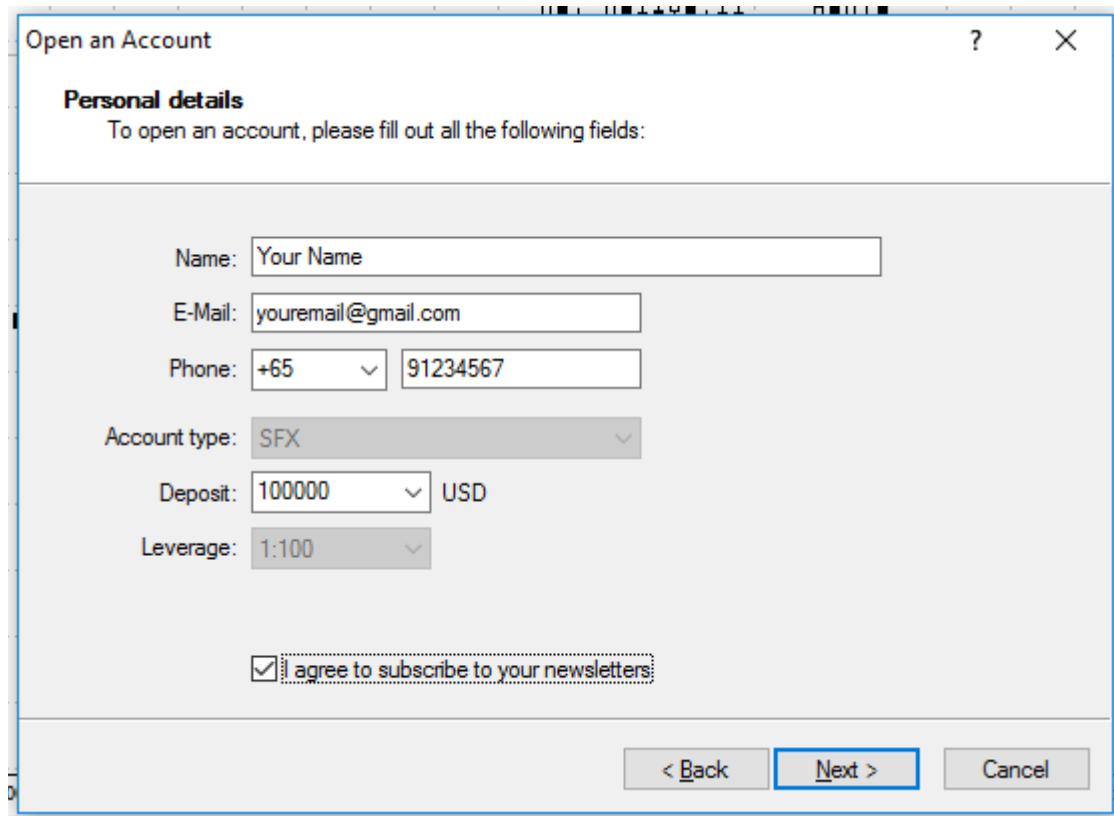
☒ **New demo account**

☐ New real account

< Back
Next >
Cancel

Open Demo Account

- Fill in the required information
- Check the box “**I agree to subscribe to your newsletters**” and click **Next**.



The screenshot shows a web form titled "Open an Account" with a sub-section "Personal details". The instructions state: "To open an account, please fill out all the following fields:". The form contains the following fields and options:

- Name: Text input field with placeholder "Your Name".
- E-Mail: Text input field with placeholder "youremail@gmail.com".
- Phone: A dropdown menu showing "+65" and a text input field with "91234567".
- Account type: A dropdown menu showing "SFX".
- Deposit: A dropdown menu showing "100000" and a text input field showing "USD".
- Leverage: A dropdown menu showing "1:100".
- Agreement: A checked checkbox followed by the text "I agree to subscribe to your newsletters".

At the bottom of the form, there are three buttons: "< Back", "Next >" (which is highlighted with a blue border), and "Cancel".

Open Demo Account

- You will receive your **login and password** to trade on our demo account
- Click **Finish** to gain access to your demo account.
- Your demo account platform will start up and displays the main trading window.

Open an Account
?
X

Registration
Wait a little, please

Name: Your Name
Account Type: demoWL_ST (1:100)
Deposit: 100000
Server: Samtrade-Demo

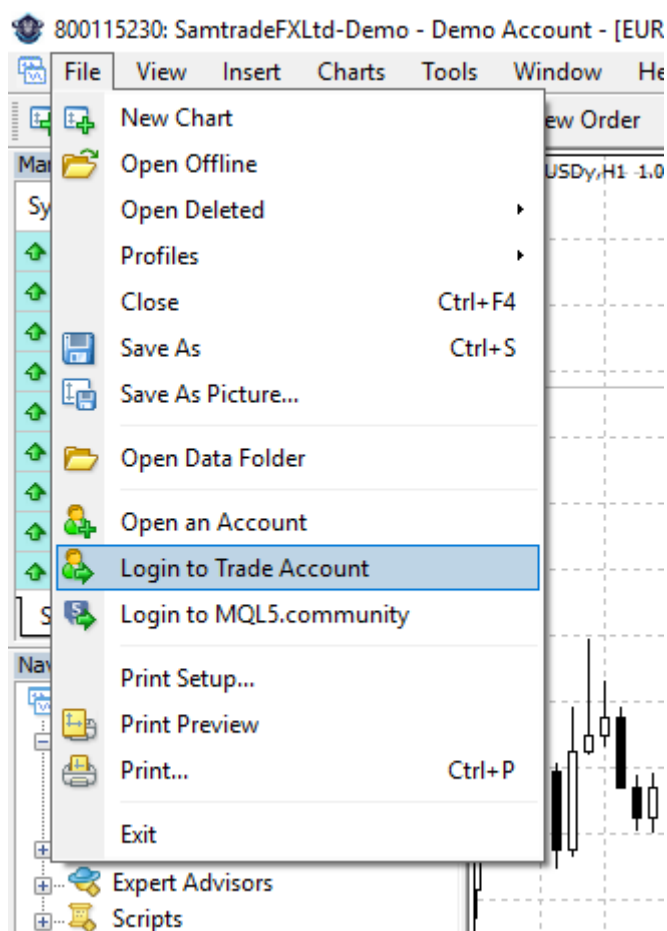
Login: **232424**
Password: **4solpru**
Investor: **ub8sgur** (read only password)
Please keep your username and passwords in a safe place.

< Back
Finish
Cancel

Login to Demo Account

- To login to your demo MT4 Account, click on

File → Login to Trade Account.




Login to Demo Account

- Key in your MT4 **Login ID** and **Password** that was provided to you.
- Select Server “**Samtrade-Demo**”
- Click on “**Login**” to login to your account.

Happy Trading!

Samtrade MetaTrader 4 Terminal ? X



Authorization allows to get access to the trade account

Login:

Password:

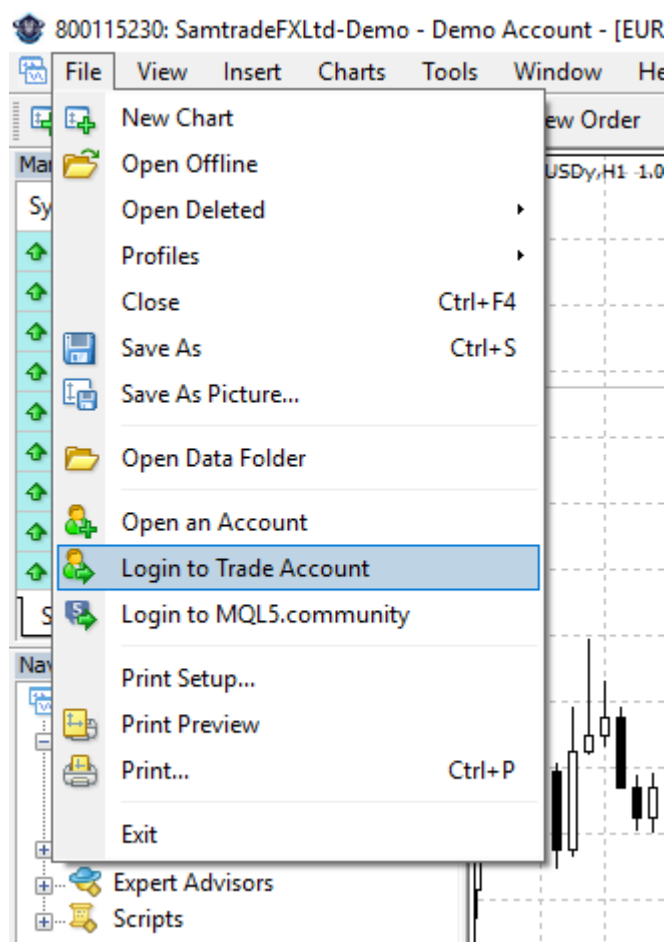
Server:

☒ Save account information

Login to Live Account

- To login to your Live MT4 Account, click on

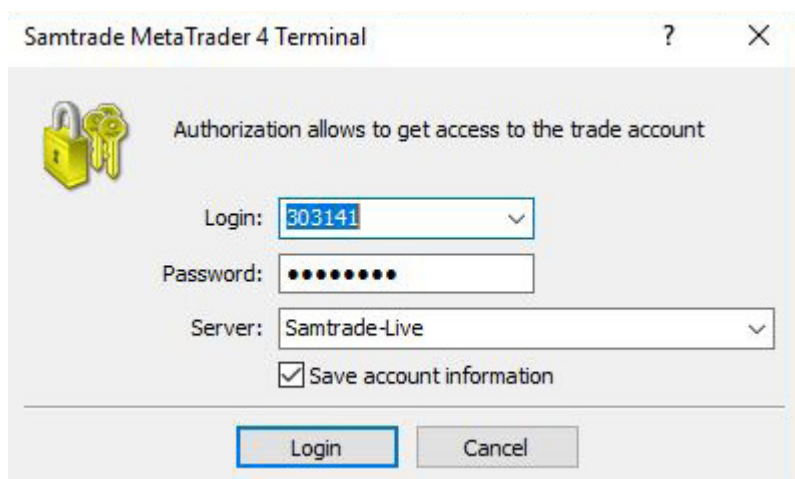
File → Login to Trade Account.



Login to Live Account

- Key in your MT4 **Login ID** and **Password** that was provided to you.
- Select Server “**Samtrade-Live**”
- Click on “**Login**” to login to your account.

Happy Trading!



The screenshot shows the 'Samtrade MetaTrader 4 Terminal' window. It features a yellow padlock icon and the text 'Authorization allows to get access to the trade account'. The login form includes a 'Login' field with the value '303141', a 'Password' field with masked characters, a 'Server' dropdown menu set to 'Samtrade-Live', and a checked checkbox for 'Save account information'. At the bottom are 'Login' and 'Cancel' buttons.

Samtrade MetaTrader 4 Terminal

Authorization allows to get access to the trade account

Login: 303141

Password: ●●●●●●●●

Server: Samtrade-Live

☒ Save account information

Login Cancel